

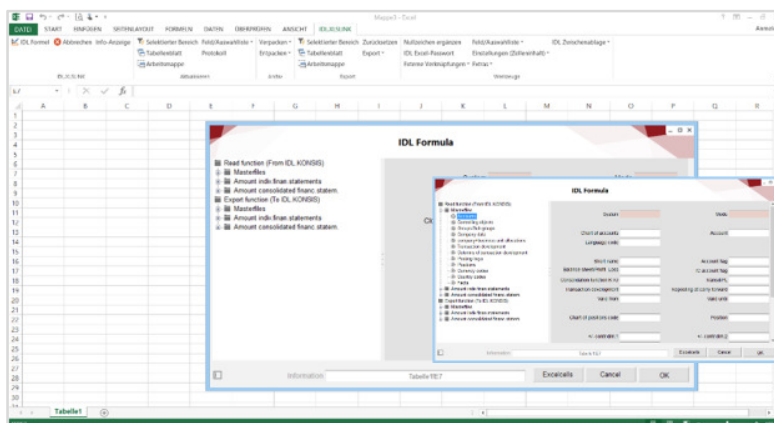


IDL.XLSLINK

Entry and Analysis of IDL.KONSIS and IDL.FORECAST Data

IDL.XLSLINK is a lean Excel add-in for analyzing as well as entering data in IDL.KONSIS and IDL.FORECAST. You can use it to load data from Microsoft Excel into the IDL database including all of the respective applications but also to dynamically transfer data cell for cell from IDL.KONSIS or IDL.FORECAST to Microsoft Excel.

Using the familiar views and functions of Microsoft Excel, you can build standard forms for generating notes to financial statements, dynamically fill individually designed analysis or presentation templates, or build reporting packages for specific users.



Brief Overview of the Functions

- | | |
|--|-------------------------|
| ✓ Read and write capabilities (IDL.KONSIS, IDL.FORECAST, MS Excel) | ✓ Cell editing |
| ✓ Master files | ✓ Dynamic loading |
| ✓ Individual financial statement data | ✓ Multilanguage support |
| ✓ Consolidated financial statement data | ✓ Plausibility checks |

Performance spectrum of IDL.XLSLINK

READING DATA FROM THE IDL DATABASE TO MICROSOFT EXCEL

Master files

The following data can be read:

- Accounts
- Controlling objects
- Groups / Sub-groups
- Company data
- Business-unit
- Transaction developments
- Posting keys
- Positions
- Currency codes
- Country codes
- Data types

Data from individual financial statements

Read access to the following report data in company financial statements is available:

- Account balances
- Intercompany account balances
- Controlling balances
- Fixed asset transactions
- Capital transactions
- Inventory IC-stocks
- Provisions transactions
- Additional development transactions
- Position balances ex reports
- Checksums
- Exchange rates
- Margin of products

Data from consolidated financial statements

Read access to the following report data in group financial statements is available:

- Account balances
- Intercompany account balances
- Controlling balances
- Fixed asset transactions
- Capital transactions
- Provisions transactions
- Additional development transactions
- Position balances ex reports
- Group monitor

WRITING OF MICROSOFT EXCEL DATA TO THE IDL DATABASE

Master files

You can write the following files to the IDL database directly from Microsoft Excel:

- Accounts
- Chart of accounts
- Groups / Sub-groups
- Company data
- Business units
- Company and business-unit allocation
- Transaction developments
- Columns of transaction development
- Development areas
- Report lines descriptions
- Report column descriptions
- Report column options
- Posting keys
- Positions
- Position and account allocations
- Controlling objects
- Currency codes
- Fixed assets objects
- Formula lines list
- Transformation group allocations
- Country codes
- Voucher classifications / consolidation functions
- Check rules
- Check rules / positions

Data from individual financial statements

The following write functions are available with respect to the reporting data from company financial statements:

- Account balances
- Intercompany account balances
- Controlling balances
- Fixed asset transactions
- Capital transactions
- Provisions transactions
- Inventories IC-stocks
- Changes in shareholdings
- Additional development transactions

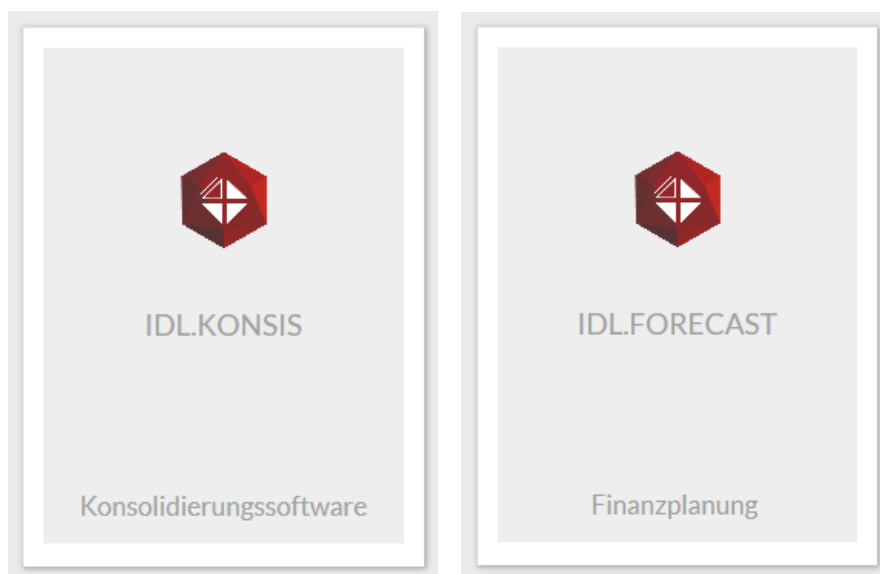
- Postings
- Exchange rates
- Vouchers
- Margin of products

Data from consolidated financial statements

The following write functions are available for group financial statement reporting data:

- Consolidation vouchers
- Consolidation postings
- Group monitor

Other solutions featured in the IDL-Product-Suite



For more information: <http://cpm-suite.idl.eu>